

-SOUVENIR PROGRAMME-

ROALD DAHL'S
CHARLIE
AND THE CHOCOLATE FACTORY

Tudor
Musical Comedy Society

R & C h
ROYAL SUTTON
COLDFIELD
TOWN HALL

NODA
For every stage

TUE 11 MAR - SAT 15 MAR 2025

TUDOR MUSICAL COMEDY SOCIETY ARE PROUD TO PRESENT:

CHARLIE AND THE CHOCOLATE FACTORY

BOOK BY DAVID GREIG
MUSIC AND ARRANGEMENTS BY MARC SHAIMAN
LYRICS BY SCOTT WITTMAN AND MARC SHAIMAN
ORCHESTRATIONS BY DOUG BESTERMAN

THIS AMATEUR PRODUCTION IS PRESENTED BY ARRANGEMENT WITH MUSIC THEATRE INTERNATIONAL (EUROPE).
ALL AUTHORISED PERFORMANCE MATERIALS ARE ALSO SUPPLIED BY MTI EUROPE WWW.MTISHOWS.CO.UK

Are you interested in joining a musical theatre society where you'll have a strong sense of belonging?

TMCS are always on the look out for new members of all backgrounds - no experience is required.

Are you are looking for a hobby? A wonderful experience? Or just an environment to feel valued and a part of something special?

If so, TMCS is the place for you! Come along to our launch night for **Grease** (details on back) or contact tudormcs@outlook.com to begin your musical theatre journey!

Tudor Musical Comedy Society are proud members of NODA:

Whether you are staging a musical, an opera, a play, a concert or a pantomime, as the UK's leading amateur theatre membership organisation, NODA is here for every show, every rehearsal, every curtain call – here for our members every step of the way.

From just starting out to centre stage; village halls to professional venues; NODA exists to celebrate, connect, support and amplify amateur theatre and theatre groups across the UK.

We provide invaluable services, expertise and resources – that help thousands of our member groups create and produce theatre, that enhances lives and benefits communities everywhere.

Whatever your passion, level of experience or stage of life, we are here to help everyone enjoy the unique benefits, opportunities and sense of community that live performance can bring.

NODA
For every stage

NODA
For every stage
noda.org.uk

A HISTORY OF

TUDOR

MUSICAL COMEDY SOCIETY

Since 1961, Tudor Musical Comedy Society (TMCS) has been crafting a legacy of inclusivity, kindness, and passion. With a steadfast commitment to excellence that rivals professional productions, we welcome individuals from all backgrounds and skill levels, cultivating talent and fostering growth within our family. Our rehearsals are defined by a genuine atmosphere of warmth and acceptance, creating a home for members past, present, and future.

As a Charitable Incorporated Organisation (CIO), we emphasize accessibility by performing at care homes and providing British Sign Language (BSL) performances. Looking ahead, we remain dedicated to the vision of our founders, passing the torch of passion and performance to future generations and ensuring the magic of musical theatre continues to shine brightly for years to come.

PAST TMCS PRODUCTIONS

2024 Calamity Jane	2010 Come to the Cabaret	1993 Oklahoma	1979 Salad Days
2023 Chitty Chitty Bang Bang	2009 The Likes of Us	1992 Mame	1979 Oh Susanna
2022 Made in Dagenham	2008 Me and My Girl	1991 45 Minutes from Broadway	1978 Carousel
2021 Legally Blonde	2007 Something Old, Something New	1991 Guys and Dolls	1977 Hello, Dolly!
2019 EVITA	2007 My Fair Lady	1990 Hello, Dolly!	1976 Viva Mexico
2018 Sister Act	2006 Guys and Dolls	1989 That's What I call another "Songs from the Shows"	1975 The Quaker Girl
2018 More Songs we like to Sing	2005 Anything Goes	1989 Half a Sixpence	1974 Bless the Bride
2017 Oliver	2004 Hello, Dolly!	1988 Oh No! Not Another "Songs from the Shows"	1973 Oklahoma
2016 Honk!	2003 Carousel	1988 Love from Judy	1972 Little Me
2015 Jesus Christ Superstar	2002 Mark and Mabel	1987 Calamity Jane	1971 Half a Sixpence
2015 Songs we like to Sing	2001 Fiddler on the Roof	1986 The Boyfriend	1970 The Dancing Years
2014 Annie	2000 South Pacific	1986 My Fair Lady	1969 Love from Judy
2013 Whistle Down the Wind	1999 My Fair Lady	1986 Annie Get Your Gun	1968 Bless the Bride
2013 What I Did for Love	1998 The Music Man	1984 Fiddler on the Roof	1967 Cinderella
2012 Return to the Forbidden Planet	1997 Die Fiedermaus	1983 The Merry Widow	1967 The Merry Widow
2012 Lights! Camera! Action!	1996 The Merry Widow	1982 The Pajama Game	1966 The Desert Song
2011 The King & I	1995 Gigi	1981 Half a Sixpence	1965 The Arcadians
2011 That's Entertainment	1994 Kiss Me Kate	1980 Finians Rainbow	1964 Wedding in Paris
2010 The Wizard of Oz	1993 Club America		1963 Goodnight Vienna
			1962 No No Nanette



Calamity Jane 2024



Legally Blonde 2021



Oliver! 2017



Annie 2014



Chitty Chitty Bang Bang 2023



EVITA 2019



Honk! 2016



That's Entertainment 2011



Made in Dagenham 2022



Sister Act 2018



Jesus Christ Superstar 2015



Guys and Dolls 2006

NODA AWARDS

- 2011:** Most Outstanding Female performance - Rachel Clarke as Anna in *The King and I*
- 2015:** Most outstanding Female Performance - Charlotte Middleton as Mary in *Jesus Chris Superstar*
- 2021:** Special Recognition award - Legally Blonde
- 2023:** Barnes Cup for best Programme - Alex Nash - *Chitty Chitty Bang Bang*

THE TRUSTEES OF TUDOR MUSICAL COMEDY SOCIETY



- From Left to Right -

- **Kevin Stableford**
External sources of income
- **Charlotte Ward**
Chair of Board of Trustees
- **Duncan Gleig**
Head of finance
- **Jayne Gleig**
External stakeholder manager

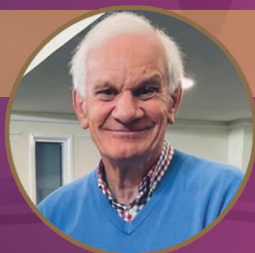
Tudor Musical Comedy Society began in 1961 when four best friends bonded over their love of theatre. Sixty-four years later, we remain a group of best friends, sharing the joy of bringing live entertainment to our community.

Over the years, TudorMCS has evolved—from light operetta to Rodgers & Hammerstein classics to contemporary productions—while staying true to our core values: family, inclusivity, and fun. Having grown up in this world, with two of those founding friends as my grandparents, I am filled with pride at every rehearsal and event.

Our Board of Trustees ensures TudorMCS continues to thrive while upholding these values. We extend heartfelt thanks to our partners for their support, our patrons for their continued encouragement, and our incredible cast, crew, tech team, orchestra, and front of house for their dedication.

Finally, to our audiences—thank you. Your support allows us to do what we love. Enjoy the show!

Charlotte Ward, Chair of Board of Trustees



NIGEL GAUNT, HONORARY PRESIDENT

Nigel Gaunt has been deeply connected to the Tudor family since its inception. His parents, Roy and Betty Gaunt, established the society more than 60 years ago! Beginning his journey as a call boy, he later took on key roles within the committee, serving as stage manager before eventually stepping into the role of Chairman—on two separate occasions!



A MESSAGE FROM OUR SHOW CHAIRMAN

Welcome to TMCS's 64th production; **Charlie and the Chocolate Factory!**

Bringing this show to life has been an incredible journey of creativity, passion, and dedication from an exceptional team of people. From the outset, we set out to create something truly magical, and I am immensely proud of what we have achieved.

This production has been particularly significant for me on a personal level. It has come during one of the most challenging times of my life, and I cannot begin to express my gratitude for the unwavering love and support I have received from this society. TMCS is more than just a theatre group—it is a family, and without the kindness, strength, and encouragement of our members, my incredible committee, and the trustees, I don't know how I would have survived.

Their support has truly been a lifeline, and I will genuinely never be able to thank them enough.

At the heart of this show is a phenomenal production team, each of whom has brought something unique and invaluable to the process. Their dedication and talent have helped turn this vision into reality, and we could not have done this without them. We have also provided new opportunities in this production, and watching individuals grow and thrive in their roles has been an absolute privilege and pleasure.

A production like this takes immense teamwork, resilience, and passion—and this team has delivered in every possible way. It has been an emotional journey, but also a truly rewarding one equally.

This show is a celebration of imagination, collaboration, and the power of theatre to bring people together. I feel incredibly lucky to have had any part in this whatsoever and thank each individual for all they've done.

Now, please sit back, relax, and prepare to enter a world of pure imagination!

Alex Nash, Production Chairman

OUR PRODUCTION TEAM



JULIET FISHER



ANDREW TIMMINS



CONNIE MORTIBOY



HELLIE ENGLAND

JULIET FISHER **DIRECTOR**

In August 2024, while teaching in Italy, my dad mentioned Tudor's next show needed a director—so I hopped on an interview call (by the pool), and here we are! Though no stranger to Sutton's musical theatre scene (SCYMT, SCMTC, CLOC, Manor), this is my directorial debut.

Our immersive show, set in 2025, reimagines the classic, blending elements from the 1971 and 2005 films with modern twists.

Huge thanks to Connie for bringing my ideas to life (who knew we could add tap?!), Andy for his musical brilliance, and Hellie for her expert staging. Massive shoutout to Alex for being a confidant and to the Tudor committee and trustees for their support. To this **INSANELY TALENTED CAST**—you embody your roles so well, and I'm beyond grateful for your hard work. To my friends and family, thank you for your endless support.

This show has taught me two things: 1) ALWAYS trust your crazy ideas, and 2) Surround yourself with people who believe in them too.

To you, the audience, I hope you enjoy the show—thank you for supporting Tudor (see you at Grease!).

CONNIE MORTIBOY **CHOREOGRAPHER**

Charlie and the Chocolate Factory was my first show as a choreographer, and what a wild ride to kick-start my career! This production has brought me immense joy and will always hold a special place in my heart. It's been an absolute pleasure to create alongside Juliet, Andy, and Hellie, and I'm so proud of what we've achieved together.

A huge thank you to the incredible cast—every single member has embraced my wildest ideas, from elegant ballet to sassy twerking, frantic tap, and German folk dancing. Their energy/dedication have truly brought this show to life!

I'm beyond grateful to everyone who has supported me throughout this journey. To my family, who entertained my crazy late-night ideas while trying to watch TV; to my boyfriend, who, despite never dancing a day in his life, practiced lifts in our lounge while dodging ceiling lights; and to my friends, colleagues, and everyone who has been there for me over the past six months—thank you!

To the audience, I hope you love every moment. Your support means the world. I'm thrilled for my future in choreography and can't wait to do it all again with Tudor's next show, Grease! Enjoy!

ANDREW TIMMINS **MUSICAL DIRECTOR**

Andy has always been passionate about music, learning to play the violin and piano from an early age. He went on to study music at Southampton University before qualifying as a Music Teacher. After working in schools, he was promoted to Arts and Music Adviser in Warrington, a role he held for six years.

For the past decade, Andy has worked in Sandwell, most recently serving as the Assistant Director of Children and Schools before retiring in December 2022.

His journey as a conductor began with the Lincoln Gilbert and Sullivan Society before moving to Lichfield, where he directed both the Lichfield Operatic Society and the Lichfield District Pantomime. He also conducted numerous school musicals, including Oliver, Guys and Dolls, Grease, South Pacific, and West Side Story.

Retirement has allowed Andy to dedicate more time to his love of music. Following an invitation to direct the music for Made in Dagenham with TMCS in 2021, he was delighted to return as Musical Director for Chitty Chitty Bang Bang and Calamity Jane and now this musical; one of the most challenging to date!

He is thrilled to be returning for Grease later this year!

HELLIE ENGLAND **PRODUCTION/STAGE MANAGER**

Theatre and music are Hellie's main passions. She has been involved with various local amateur theatre companies for over 30 years, both on stage (dancing and acting) and behind the scenes. In the past 15 years, she has directed, produced, and stage-managed numerous musicals and plays.

Professionally, Hellie works backstage in the theatre industry as a Stage Manager and Stage Technician. She has experience in the West End, regional theatres, live music festivals, and touring the country with various musical, opera, and ballet companies.

As a Goth, Hellie is a lover of the morbid and macabre and a huge Roald Dahl fan. So, she was thrilled to join Tudor's production team and use her skills to help produce this highly technical (dark and slightly gruesome) show. As Production Manager, her role is to bring together all the different elements that make up the magic of a show - lighting, sound, set design, costumes, wigs, props, and video - and synchronize them seamlessly. During the performance, she'll be 'hiding in the shadows,' coordinating the scene changes from backstage.

This has been a challenging, yet enjoyable and fun process, working with so many talented individuals and supporting Connie and Juliet in their roles as the new generation of creatives.

THE ROYAL OAK

TRADITIONAL
VILLAGE PUBLIC
HOUSE

SERVING
REAL
ALES

A VARIETY OF
KEG LARGER
AND BEERS



FAMILY
FRIENDLY
BEER GARDEN

91 MAIN STREET
STONNALL
WALSALL
WS9 9DY

AFFORDABLE PRICES!

AFTER REHEARSAL LOCAL FOR TMCS

CHARMING AMBIANCE

WE'D LIKE TO PERSONALLY THANK OWNERS SHARON AND DAVE FOR THEIR CONSTANT SUPPORT OF TMCS!

R & G
ROYAL
SUTTON
COLDFIELD
TOWN HALL

WHAT'S ON THIS EASTER



SCAN TO BOOK



THE FROG
PRINCE:
THE HOPPIEST
OF PANTOS!

MON 14TH
APRIL 2025



THE LITTLEST
YAK

TUES 15TH
APRIL 2025



THE STADIUM
BIG BAND
LIVE IN CONCERT

WED 16TH
APRIL 2025



THE LITTLE MIX
SHOW

SAT 19TH
APRIL 2025

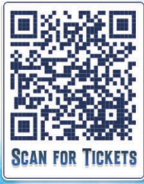
BOOK ONLINE AT WWW.SUTTONCOLDFIELDTOWNHALL.COM
OR CALL OUR BOX OFFICE ON 0121 296 9543

ORIGINAL SONGS BY
DAVID HENEKER

NEW SONGS, MUSIC, & LYRICS BY
GEORGE STILES & ANTHONY DREWE

BOOK BY
JULIAN FELLOWES

MANOR MUSICAL THEATRE COMPANY
BY ARRANGEMENT WITH CAMERON MACKINTOSH
PRESENTS



SCAN FOR TICKETS

OR VISIT TICKETSOURCE.CO.UK



ORCHESTRATIONS BY
WILLIAM DAVID BROHN

CO-CREATED BY
CAMERON MACKINTOSH



THIS AMATEUR PRODUCTION IS PRESENTED BY ARRANGEMENT WITH MUSIC
THEATRE INTERNATIONAL. ALL AUTHORISED PERFORMANCE MATERIALS ARE
ALSO SUPPLIED BY MTI EUROPE
WWW.MTISHOWS.CO.UK



Parental guidance advised

SUTTON COLDFIELD
MUSICAL THEATRE



EVERYBODY'S TALKING ABOUT JAMIE

24 - 28TH JUNE 2025

The Royal Sutton Coldfield Town Hall

Book now at
www.suttoncoldfieldtownhall.com
or call 0121 296 9543



EVERYBODY'S TALKING ABOUT JAMIE
Book & Lyrics by TOM MACRAE, music by DAN GILLESPIE SELLS, from an idea by JONATHAN BUTTERELL

This amateur production of EVERYBODY'S TALKING ABOUT JAMIE is presented by
arrangement with Concord Theatricals Ltd. www.concordtheatricals.co.uk



CLOC Musical Theatre Company
Affiliated to the National Operatic and Dramatic Association



Lerner & Lowes'

My Fair Lady



Sutton Coldfield Town Hall
22nd to 25th October 2025

Book and Lyrics by ALAN JAY LERNER
Music by FREDERICK LOEWE
Adapted from George Bernard Shaw's Play and
Gabriel Pascal's Motion Picture 'PYGMALION'
Original Production Directed and Staged by Moss Hart.
This amateur production is presented by arrangement
with Music Theatre International (Europe).
All authorised performance materials are also supplied by MTI Europe

Book online at www.cloc.org.uk
Box Office Enquiries: 07873 192715



An amateur production by arrangement with The Really Useful Group Limited

Sutton Coldfield Musical Theatre Company
presents

JESUS CHRIST SUPER STAR

Lyrics by
Tim Rice

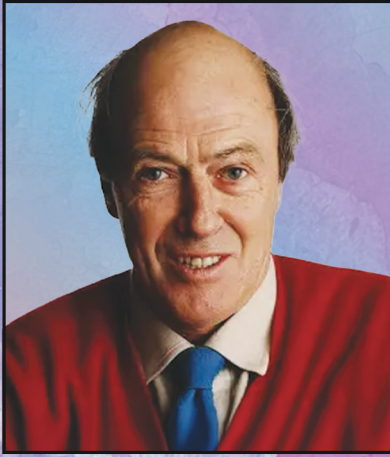
Music by
Andrew Lloyd Webber

4-8 November 2025
The Royal Sutton Coldfield Town Hall



Tickets: www.suttoncoldfieldtownhall.com - 0121 295 9643

Roald Dahl



Roald Dahl (1916–1990) was a British writer, best known for his children's books.

Born in Llandaff, Wales, to Norwegian parents, he served as a fighter pilot in the Royal Air Force during World War II before turning to writing.

His early works included short stories which were written for adults, they often featured dark humour and unexpected twists.

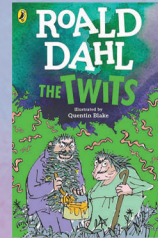
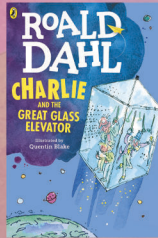
He began writing children's books after becoming a father and telling bedtime stories to his own kids. His first children's book, *James and the Giant Peach* (1961), was inspired by these imaginative tales. His love for storytelling, combined with his belief that children deserved exciting, unpatronizing literature, led him to become one of the most celebrated children's authors of all time.

He also wrote the screenplay for 'Chitty Chitty Bang Bang' and the James Bond film 'You Only Live Twice'.

His works continue to inspire films and stage productions to this very day.

His notable Children's novel

The *Gremlins* (1943), *James and the Giant Peach* (1961), *Charlie and the Chocolate Factory* (1964), *The Magic Finger* (1966), *Fantastic Mr. Fox* (1970), *Charlie and the Great Glass Elevator* (1972), *Danny, the Champion of the World* (1975), *The Enormous Crocodile* (1978), *The Twits* (1980), *George's Marvellous Medicine* (1981) *The BFG* (1982), *The Witches* (1983), *The Giraffe and the Pelly and Me* (1985), *Matilda* (1988), *Esio Trot* (1989), *The Minpins* (1991 – published posthumously)



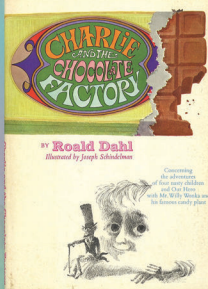
Charlie and the Chocolate Factory

The Children's novel

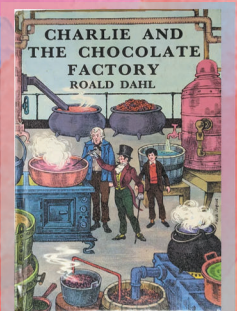
Roald Dahl's *Charlie and the Chocolate Factory* was first published in the U.S. by Alfred A. Knopf in 1964 and later in the U.K. by George Allen & Unwin in 1967. The story follows young Charlie Bucket's adventure inside Willy Wonka's chocolate factory, inspired by Dahl's childhood experiences with the fierce rivalry between British confectionery companies Cadbury and Rowntree's.

Early drafts featured different character names—Willy Wonka was initially Mr. Ritchie, the Oompa-Loompas were Whipple-Scruppets, and Veruca Salt was Elvira Entwistle, among others. The book has faced criticism, particularly regarding its original depiction of the Oompa-Loompas as African pygmies, leading Dahl to revise them with white skin and hippie-like traits.

Despite controversies, the novel remains a beloved classic, inspiring multiple film adaptations, a stage musical, and leaving a lasting impact on children's literature and popular culture.



Front cover of the first US edition



Front cover of the first UK edition

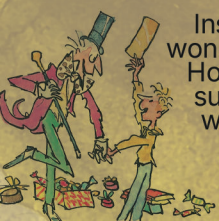
Synopsis

We follow a young Charlie Bucket, a kind-hearted but impoverished child who dreams of visiting the world-famous Wonka Chocolate Factory.

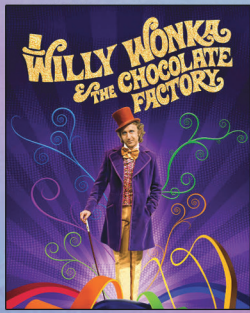
After a chance encounter - and a brilliant idea, the mysterious and reclusive chocolatier Willy Wonka announces a contest—five golden tickets hidden inside chocolate bars will grant lucky winners a tour of his magical factory.

Against all odds, Charlie finds a ticket and joins four other children; Augustus, Veruca, Violet and Mike, who each with their own flaws as they go on an extraordinary adventure.

Inside the factory, Wonka reveals a world of pure imagination and wonders—rivers of chocolate, edible landscapes, and bizarre inventions. However, as the tour progresses, the selfish and greedy children succumb to their own vices. In the end, only honesty and humility will be victorious with the prize being something truly remarkable.



Interesting facts about the films



Released: 30 June 1971
Running time: 1h 40m

The Chocolate River Stank – The river was made of real chocolate, cream, and water but quickly spoiled under the hot lights.

Augustus' Dirty Water – The "chocolate" Augustus fell into was actually cold, dirty water—he hated it!

Real Reactions – The kids had never seen the Chocolate Room set before filming, so their awe was 100% real.

Charlie's Pay check – Peter Ostrum (Charlie) was offered a three-film contract but quit acting and became a vet.

Everlasting Gobstopper Secret – The cast was given real Gobstoppers but told not to chew them for continuity.

Budget from a Cereal Company – Quaker Oats funded the film to launch a real Wonka Bar (which flopped).



Released: 29 July 2005 (UK)
Running time: 1h 55m

Deep Roy Played Every Oompa Loompa – He performed each role separately, earning a \$1 million pay check.

40 Real Squirrels – Trained squirrels were used for Veruca Salt's nut-sorting scene, they took 19 weeks to fully train.

Tim Burton's Wife – Helena Bonham Carter, who plays Charlie's mom, was director Tim Burton's real-life wife at the time of filming.

Depp wore prosthetic teeth – Fake teeth were used to fit the image of Wonka's eccentric look.

Dahl's Family Approved – Unlike the 1971 film, this adaptation had full support from Roald Dahl's estate.

Hidden References – The film features nods to Tim Burton's Edward Scissorhands and Batman.



Released: 8 December 2023 (UK)
Running time: 1h 56m

Visual Style Inspiration – The film was influenced by classic European storybooks, which gave it a distinct, storybook-like look.

Unused Dahl Story Elements – The film incorporates elements from Dahl's unpublished and lesser-known works.

Oompa Loompa Design – The Oompa Loompas' design in Wonka was inspired by classic 1920s circus performers, with a twist.

Willy Wonka's Back story – The film reveals that young Willy Wonka was inspired by both Roald Dahl's personal childhood and stories he heard growing up in England.

Chalamet's Training – Timothée Chalamet was committed to delivering a strong Wonka so participated in dance and vocal boot camps for three months.

Interesting facts about the musical



The musical 'Charlie and the Chocolate Factory' premiered in the West End at London's Theatre Royal Drury Lane on June 25, 2013, and ran until January 7, 2017.

The show was directed by Sam Mendes, best known for films like Skyfall, Spectre and 1917.

The London production was the highest-grossing show to ever play at the Theatre Royal Drury Lane at the time.

Differences Between the West End and Broadway Versions

- The Broadway adaptation made significant changes, including replacing some original songs from the West End with well-known songs from the 1971 film Willy Wonka & the Chocolate Factory, such as "Pure Imagination," "The Candy Man," and "I've Got a Golden Ticket."
- The Broadway production had a different set design, opting for a more minimalist, magical approach rather than the elaborate, large-scale designs used in London.
 - The role of the Oompa Loompas was changed between versions. In the West End, they were played by actors in creative costumes with puppetry elements, while on Broadway, they were portrayed using stilts and other physical tricks.
 - The West End version included an entirely original character, a Russian scientist named Professor Prodnose, who was later cut from the Broadway adaptation.
- Charlie's father, Mr. Bucket, was present in the West End version but was removed in the Broadway version, making Charlie's mother a single parent.
- In the Broadway version, the four other Golden Ticket winners (Augustus, Veruca, Violet, and Mike) were played by adult actors, rather than child actors, to give them a more exaggerated, comedic presence.



SCENES AND MUSICAL NUMBERS

ACT I

0. OVERTURE

SCENE 1: "OUTSIDE THE FACTORY"

THE CANDY MAN - WILLY WONKA, ENSEMBLE

SCENE 2: "A CANDY SHOP"

WILLY WONKA! WILLY WONKA! - CHARLIE,
ENSEMBLE
THE BIG IDEA
CANDY MAN (REPRISE) - CHARLIE

SCENE 3: "THE BUCKET SHACK"

CHARLIE, YOU & I - GRANDPA JOE, CHARLIE
A LETTER FROM CHARLIE BUCKET - CHARLIE,
MRS. BUCKET, GRANDPARENTS

SCENE 4: "THE NEXT DAY"

HEADLINE SCENE
CANDYSHACK

SCENE 5: "STREET/THE CANDY SHOP (GTW SEQUENCE)"

NEWS OF AUGUSTUS
MORE OF HIM TO LOVE - MRS. GLOOP,
AUGUSTUS, ENSEMBLE
NEWS OF VERUCA
WHEN VERUCA SAYS - MR. SALT, VERUCA
VERUCA PLAYOFF
NEWS OF VIOLET
THE QUEEN OF POP - MR. BEAUREGARDE,
VOILET, GUM CHOMPIN' DIVAS, ENSEMBLE
THE QUEEN OF POP PLAYOFF
WILLY WONKA UNDERSCORE
NEWS OF MIKE TEEVEE
THAT LITTLE MAN OF MINE - MRS. TEEVEE, MIKE
THAT LITTLE MAN OF MINE PLAYOFF

SCENE 6: "THE BUCKET SHACK"

CHARLIE'S BIRTHDAY
IF YOUR FATHER WERE HERE - MRS. BUCKET,
GRANDPARENTS

SCENE 7: "THE CANDY SHOP/THE BUCKET SHACK"

STAY SAFE OUT THERE
I'VE GOT A GOLDEN TICKET / GRANDPA JOE -
CHARLIE, MRS. BUCKET, GRANDPARENTS,
ENSEMBLE

SCENE 8: "THE FACTORY GATES"

RED CARPET - GOLDEN TICKET WINNERS
IT MUST BE BELIEVED TO BE SEEN - COMPANY

ACT II

13. ENTR'ACTE

SCENE 9: WONKA'S OFFICE

STRIKE THAT REVERSE IT - WONKA, GTW,
PARENTS, GRANDPA JOE

SCENE 10: THE CHOCOLATE ROOM

PURE IMAGINATION / GRANDPA JOE - WONKA,
GTW, PARENTS, GRANDPA JOE
IT'S MY CREATION
AUF WIEDERSEHEN AUGUSTUS - OOMPA
LOOMPAS, WILLY WONKA, ENSEMBLE
AUF WEIDERSEHEN PLAYOFF
RED DOOR
THE MIXING ROOM

SCENE 11: THE MIXING ROOM

BLUEBERRY PIE
YOU GOT WHATCHA WANT - OOMPA LOOMPAS,
MR. BEAUREGARDE, WILLY WONKA, ENSEMBLE
RED DOOR AGAIN

SCENE 12: THE INVISIBLE CORRIDORS

THE INVISIBLE CORRIDOR

SCENE 13: THE NUT ROOM

VERUCA'S NUTCRACKER: SWEET! - OOMPA
LOOMPAS, ENSEMBLE

SCENE 14: S.S. WONKA

S.S. WONKA

SCENE 14A: THE TV ROOM

MATCH GAME
VIDIOTS - OOMPA LOOMPAS, WILLY WONKA,
MRS. TEEVEE, ENSEMBLE
THAT LITTLE MAN OF MINE REPRISE - MRS.
TEEVEE, MIKE

SCENE 15: THE IMAGINING ROOM

THE IMAGINING ROOM
FISTICUFFS
THE NOTEBOOK

SCENE 16: THE ELEVATOR

THE VIEW FROM HERE - WILLY WONKA, CHARLIE

SCENE 17: OUTSIDE THE FACTORY

FINALE
BOWS - COMPANY

OUR SENSATIONAL CAST

PRINCIPLE CAST

WILLY WONKA:	ELLIOT SCOTT-LOLLEY
CHARLIE BUCKET:	ELLIE HOWARD AND JACK BRAYLEY-BODDINGTON
MRS. BUCKET:	PAULA O'HARE
GRANDPA JOE:	MARK SKETT
AUGUSTUS GLOOP:	ALEX NASH
MRS. GLOOP:	ELIZABETH KIRK
VERUCA SALT:	BETHANY DAVIS
MR. SALT:	MIKE WILLIS
VIOLET BEAUREGARDE:	SAMANTHA ROGERS
MR BEAUREGARDE:	JAMES FISHER
MIKE TEEVEE:	DAN MCCLOSKEY
MRS. TEEVEE:	HANNAH WEAVER
CHERRY:	LIZZY SMALL
JERRY:	HARSHEET SINGH
GRANDMA JOSEPHINE:	JOANNE BROWNING
GRANDPA GEORGE:	WAYNE COOPER
GRANDMA GEORGINA:	LISA HOWARD
MRS. GREEN:	JO BRADBURY
JEREMY THE SQUIRREL:	ALEX TUCKWELL
VERUCA'S BALLET TEACHER:	JANINE REVELL
PRINCIPAL GUM CHOMPIN' DIVA:	ELLIE SIMPSON

DANCE CAPTAINS

ELLIE SIMPSON AND ALEX TUCKWELL

PRINCIPAL DANCERS

ALEX TUCKWELL, CHARLOTTE RAYBOULD, ELLIE SIMPSON, JANINE REVELL, MARIA MCGARRIGLE, PAIGE HOWEN

ENSEMBLE CAST & OOMPA LOOMPA

ALEX TUCKWELL, BETH STABLEFORD, BETHANY DAVIS, CHARLOTTE RAYBOULD, DAN MCCLOSKEY, ELIZABETH KIRK, ELLIE SIMPSON, EVIE SPOWAGE, HANNAH MUXLOW, HANNAH WEAVER, HARSHEET SINGH, IOLA JONES, IZZY TREEN, JAMES FISHER, JANINE REVELL, JO BRADBURY, JOANNE BROWNING, LISA HOWARD, LIZZY SMALL, MARIA MCGARRIGLE, MAURICE BUXTON, MIKE WILLIS, MYLEIGH DAVIS, PAIGE HOWEN, PAULA O'HARE, RACHAEL KIRK, SAMANTHA ROGERS, THOMAS FLANAGAN, WAYNE COOPER

BRITISH SIGN LANGUAGE (BSL) PERFORMER

REBECCA PALMER

INSIDE THE WRAPPER: MEET THE CAST & TEAM



MEET THE CAST



ELLIOT SCOTT-LOLLEY WILLY WONKA

Elliot Scott-Lolley has been passionate about musical theatre since the age of 12, performing in a variety of productions throughout his life.

Alongside his love for the stage, Elliot is also an accomplished composer, creating original music for a range of projects, including a variety of theme parks, The Dinosaur Experience, Lone Ranger, along with other films, video games and trailers. His ultimate dream is to compose his own musical, combining his talents in storytelling and composition to bring something unique to the stage.

After an eight-year break from performing in musicals, Elliot is thrilled to be making his return.

The opportunity to step back into the world of theatre—especially in such a fun and iconic role—feels both exciting and deeply rewarding.

He is incredibly grateful to be part of this production and to share his love for music and performance with new found, life long friends and audiences once again.



ELLIE HOWARD CHARLIE BUCKET (WED, FRI, SAT EVE)

Ellie first started performing when she was six - playing Molly in Annie with Momo Academy of Drama. She recently reprised the show as part of the orphan ensemble with Sutton Coldfield Musical Theatre Company. Also

with Momo, she had played Dorothy in The Wizard of Oz and Sebastian in The Little Mermaid. She also takes part in performances with Pauline Quirke Academy (PQA) Lichfield, where she has performed with G4 twice and played a Cough in their West End production Troubles a' Brewin. Ellie will be returning to the West End later this year with PQA's new musical Across The Line. More recently, she has done two performances with Lichfield Musical Youth Theatre. She was part of the ensemble in both Grease and Les Miserables but featured as a dead body in Les Misérables.

Charlie and The Chocolate Factory is Ellie's favourite musical and she is very excited to be playing her dream role of Charlie Bucket. This is her first show with Tudor and she is looking forward to sharing the stage with her mum Lisa - playing Grandma Georgina.

JACK BRAYLEY- BODDINGTON

CHARLIE BUCKET (TUE, THUR, SAT MAT)

13-year-old Jack Brayley-Boddington is an enthusiastic amateur actor who is excited to return to the stage with Tudor for his second show. A naturally shy and quiet boy, Jack transforms when he steps into a character, finding confidence through performance. He began his amateur dramatics journey in 2022 and quickly built up an impressive repertoire of roles. Jack has previously portrayed Jeremy in Chitty with Tudor, Kurt Von Trapp in The Sound of Music, and Oliver in Oliver! With Manor. He has also performed in Footloose with Sutton Youth. With each role, Jack has developed a true passion for musical theatre.

As he prepares to return to the stage, Jack is eager to bring his energy to another fantastic performance. Jack has developed a passion for the role and has thoroughly enjoyed the process. When performing, he comes out of his shell, transforming into a confident character that contrasts with his more reserved self offstage. Jack finds loves collaborating with fellow cast and immersing himself in the world of the story showing his dedication to the art of theatre.

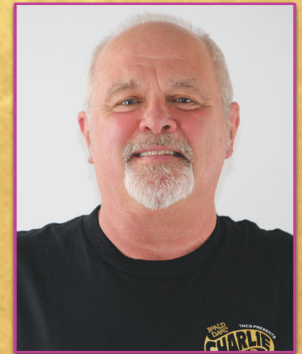


MARK SKETT GRANDPA JOE

Mark says that he "is delighted to be back performing with Tudor Musical Comedy Society" this being his third show with this "welcoming and talented group".

He previously took to the stage, with Tudor, as "The Baron" (and Lord Scrumptious) in "Chitty Chitty Bang Bang" and was also in their production of "Made in Dagenham". Over the last 20 years he has appeared in over 20 productions with local companies having played many principal roles. These include "Gomez" (The Addams Family), "Edna Turnblad" (Hairspray), "The Modern Major General" (Pirates of Penzance), "Dennis" (A Bunch of Amateurs), "Dad" (Our House), Harold (The Full Monty) and "Cookie" (Return to the Forbidden Planet).

In February of this year Mark appeared as "Drake" and "Bert Healy" in a production of "Annie". He is looking forward to bringing "Grandpa Joe", and his stories, to the Town Hall stage and would like to thank the production team for giving him the opportunity to perform the role. He hopes that you all enjoy the show!!





PAULA O'HARE
MRS. BUCKET

Since watching Willy Wonka and the Chocolate Factory on repeat as a child, Paula has wanted to play the role of Mrs. Bucket.

Paula been involved in amateur theatre for over 30 years and has been a member of Tudor since 2012 playing Gloria in 'Return to the Forbidden Planet', Grace in 'Annie' in 2014, Ida in 'Honk' in 2016 and Sister Mary Martin of Tours in 'Sister Act' in 2018. Most recently Paula played Calamity Jane in 'Calamity Jane'. Paula has played Maria in 'The Sound of Music', Nancy in 'Oliver', and Golde in 'Fiddler on the Roof' with Manor Musical Theatre Company, as well as roles with Lichfield Operatic Society.

Outside of theatre Paula is an avid linguist, speaking four languages, and loves to travel with her family. Paula has had a fantastic time rehearsing this show with the lovely cast and thanks her family for their support and understanding when she needed to be at rehearsal and to practice lines!



JOANNE BROWNING
GRANDMA JOSEPHINE

Jo has been a member of TMCS since 2013, with her debut in Whistle Down the Wind. This is her first lead role with the society, and she is thrilled—especially as it involves lying down for most of the show!

Past performances include Oliver!, EVITA, and her Favourite, Calamity Jane. Jo is delighted to be playing Grandma Josephine a role she heavily relates to—living up to her society nickname 'Grandma Jo'!

WAYNE COOPER
GRANDPA GEORGE

Wayne first graced the stage in 2009, in the chorus of "My Fair Lady," sparking his passion for theatre. He's since played many lead & supporting roles in plays & musicals for various local societies. His favourite being Gaston in Disney's Beauty and the Beast. Last year he made his Tudor debut as Doc Pearce in Calamity Jane. This time Wayne's looking forward to creating two very contrasting comedy characters as Grandpa George (Act 1) and Bodge-It the Oompa Loompa (Act 2).



LISA HOWARD
GRANDMA GEORGINA

Lisa's first musical performance was in a school production of Calamity Jane. She has since been in many productions with Tudor and Lichfield Operatic Society, including Carousel, My Fair Lady, Witches of Eastwick and Jekyll & Hyde. Lisa is returning

to the stage after a 13 year break. Whilst she usually enjoys being in the ensemble, Lisa is looking forward to playing Grandma Georgina. She is especially excited to be sharing the stage with her daughter Ellie (Charlie Bucket).

JO BRADBURY
MRS. GREEN

Jo is thrilled to be playing Mrs. Green in her first ever lead role. This is her third show with TMCS, having previously appeared in Chitty Chitty Bang and Calamity Jane.

Despite being terrified, she is incredibly grateful for the support and encouragement from the amazing cast. Their kindness has uplifted her every step of the way. Jo is having an absolute blast and is so thankful for this wonderful opportunity!



LIZZY SMALL
CHERRY

Lizzy is excited to be making her debut with Tudor in the role of Cherry Sundae, the hyperactive reporter, in this fantastic production of Charlie and the Chocolate Factory! She can't wait for everyone to see the show and hopes you enjoy every sweet moment.

Lizzy previously appeared in Blue Remembered Hills with Highbury Theatre and has studied Performing Arts at college. Lizzy is passionate about theatre and is excited to continue her journey on stage. Enjoy the show!!

HARSHEET SINGH
JERRY

Harsheet is thrilled to step back on stage with Tudor after his debut as Pete in Calamity Jane. This time, he's diving into the world of Charlie and the Chocolate Factory, and he couldn't be more excited! Rehearsals have been a sweet treat, with a cast as golden as the tickets and a production team working Oompa Loompa-level magic behind the scenes. He hopes the audience enjoys this show as much as he's enjoyed being part of it—get ready to enter a world of pure imagination!





ALEX NASH
AUGUSTUS GLOOP

Alex is thrilled to be playing Augustus in this production. He previously performed as Boris in Chitty Chitty Bang Bang and Francis Fryer in Calamity Jane.

A member of the society for six years, Alex has also taken to the stage at the New

Alexandra Theatre with BMOS in multiple productions. He has loved every moment working with this amazing cast and crew and hopes you enjoy the show as much as they have enjoyed creating it!



ELIZABETH KIRK
MRS. GLOOP

Liz has been a part of the Tudor family for 2 years now and after having cameo roles in Chitty Chitty Bang Bang and Calamity Jane.

She is thrilled to be taking on a principal role in this production. She looks forward to sharing the stage once again with her daughter Rachael.

She would like to thank her family for the continued support they give her with her hobby.



BETHANY DAVIS
VERUCA SALT

Beth is delighted to be playing her first principal role in the role of Veruca Salt!

She has been a dedicated member of Tudor for 15yrs, performing as a featured dancer in their productions. After having her first speaking role as the barmaid in Calamity

Jane, Beth is excited to take on this new challenge of bringing Veruca Salt to the stage. She would like to thank the production team for this opportunity and she'd also like to thank her family and friends for their continued support!



MIKE WILLIS
MR. SALT

This is Mike's second show with Tudor after joining up for their last show, Calamity Jane.

Prior to this, Mike had performed as a pit man in Wasteland at the Birmingham Rep and spent a few years singing in a contemporary choir with gigs at the Commonwealth Games opening ceremony and backing Take That for their Birmingham tour dates in 2019.

He is very much looking forward to playing the Russian peanut billionaire, Mr Salt.



SAMANTHA ROGERS
VIOLET BEAUREGARDE

Sam is thrilled to be playing Violet Beauregarde, the gum-chewing pop star, in this production of Charlie and the Chocolate Factory! She is no stranger to the stage, having previously played Adelaide in Tudor's Calamity Jane in 2024. Sam has been performing with

CLOC MTC since 2012, with notable roles including Alice Beineke in The Addams Family and Dorothy in The Wizard of Oz. She has really enjoyed the rehearsal process and can't wait to bring Violet to the stage.



JAMES FISHER
MR. BEAUREGARDE

James is thrilled to be back with TMCS, working with a great cast and the talented Sam Rogers as his gum-chomping stage daughter. He's especially proud of his daughter Juliet for her innovative direction.

This marks his fourth Tudor show, following roles in Made in Dagenham (Monty), Chitty (Gordon the spy), and Calamity Jane (Henry Miller). With many performances under his belt, he encourages all interested in theatre to give it a try—you won't regret it!



DAN MCCLOSKEY
MIKE TEEVEE

Dan is thrilled to play Mike Teevee! His previous credits include Buck Barrow (Bonnie & Clyde), Lord Farquaad (Shrek the Musical), Simon Zealots (Jesus Christ Superstar), and Clopin (The Hunchback of Notre Dame). Bringing Mike's rebellious energy and rock belt

to life has been a blast. Fun fact: he survived the notoriously rubbish PS2 Charlie and the Chocolate Factory game as a kid! Dan hopes to go on to perform professionally on regional stages.



HANNAH WEAVER
MRS. TEEVEE

Hannah is delighted to joining tudor for her second show having previously played the role of Toymaker in chitty chitty bang bang. A member of other local theatre groups Hannah has played many great parts including Joanie (The Full Monty) and Freda McCracken (Annie). Mrs Teevee is dream role and Hannah has thrown herself into it with gusto!! Hannah would like to thank all her family, friends and colleagues who are always so generous in their support.



ELLIE SIMPSON
PRINCIPAL GUM CHOMPIN'
DIVA/PRINCIPAL DANCER

Ellie's first venture on the stage was at age of 18 months. Since then she has been on the look out for any and every challenge she can get. Charlie and the Chocolate Factory has definitely provided her with that.

Ellie has thoroughly enjoyed getting her gum-chomping teeth into all the choreography for this show and as Female Dance Captain is really proud of everything the cast have achieved.



JANINE REVELL
VERUCA'S BALLET TEACHER
/PRINCIPAL DANCER

Janine is so proud to be part of this unique and visually stunning production. How many shows can you play both an angry Russian ballet teacher and a homicidal squirrel in the same night?! As a Principal Dancer, Janine is

enjoying all the different styles (but no spoilers!). Janine joined in 2020 for Legally Blonde, having previously performed with SCMTC. She has loved working with this incredibly talented cast and production team!



MARIA MCGARRIGLE
PRINCIPAL DANCER

Maria, our Irish gem, has been on stage since the age of five, dedicating her life to the art of dance. Having participated in numerous productions, she has had the honour of representing both Ireland and Northern Ireland in the Dance World Cup. This marks her first

show with Tudor, and she is incredibly grateful for the experience and the wonderful friendships she has formed along the way. Maria cherishes every opportunity to perform and looks forward to many more exciting journeys ahead.



HANNAH MUXLOW
ENSEMBLE

Hannah is thrilled to be making her debut with Tudor in this production of Charlie and the Chocolate Factory. She is playing the Camera Woman and is having a great time dashing around the stage after the reporters! Hannah is no stranger to the stage, having

recently played the principal role of Fairy Dust in Cloc MTC's panto, as well as performing in several other productions with Cloc since 2012. Hannah is excited to be a part of the show and can't wait to get on the stage again.



ALEX TUCKWELL
JEREMY THE SQUIRREL &
PRINCIPAL DANCER

Alex has been a member of TMCS for eleven years and is thrilled to be part of a magnificent show like this.

His favourite part of theatre has always been dancing so he is very glad he can share his passion with you as a principle dancer as well as being the male dance captain.

He'd like to thank the production team for all the time and effort that has been put into the show!



CHARLOTTE RAYBOULD
PRINCIPAL DANCER

Charlotte is really excited for her third show with TMCS, having previously performed with them in Chitty Chitty Bang Bang and Calamity Jane. Charlotte has been performing locally since 2016, taking part in many shows including The Wizard of Oz, Our House and The Addams Family.

This is the first show where she will be a principal dancer. She can't wait to showcase all the hard work put in and all the amazing dances they have learnt, even tap!



PAIGE HOWEN
PRINCIPAL DANCER

Paige is excited to be returning to Tudor, having previously performed in Made in Dagenham in 2022. She has also been involved in several productions with local companies, including CLOC MTC and SMYTC.

Most recently, Paige played Avarice in CLOC's panto Sleeping Beauty. She is thrilled to be a featured dancer in this production and wants to thank her family and friends for their support. Enjoy the show!



BETHANY STABLEFORD
ENSEMBLE

I joined TMCS 10 years ago and have loved being with the group ever since and making new friends.

Charlie and the Chocolate Factory is one of my favourite Roald Dahl books. I really love to watch the film versions, especially the Gene Wilder one. I am so excited to be entering a world of Pure Imagination. I'd like to dedicate the show to my little nephew Freddie, who's seeing me perform on stage for the first time. I hope you enjoy our show!



IOLA JONES
ENSEMBLE

This is Iola's first show with Tudor Musical Comedy Society and at Sutton Town Hall.

She has been performing since 2017. She has enjoyed playing a variety of characters and her favourite scene is

"You Got Whatcha Want".

She's enjoyed bringing Frazzles: the accident-prone Oompa Loompa to the stage most of all!



MAURICE BUXTON
ENSEMBLE

Maurice has always enjoyed musical theatre and has been taking part in productions for over 30 years. He has done over 50 shows. His first show with Tudor was playing 'Rattlesnake' in Calamity Jane which he thoroughly enjoyed. He has found the music in

Charlie and the Chocolate Factory a welcome challenge and this production is different to anything he has done in the past. Maurice is looking forward to the show and hopes you all enjoy it!



IZZY TREEN
ENSEMBLE (TUE, THUR, SAT MAT)

Izzy has been involved in musical theatre since age eight, and has been in shows such as: Cats, The Little Mermaid, Rock of Ages, many concerts and showcases. This will be her first production with TMCS. She couldn't be

more excited to perform with them as has loved every moment of rehearsals. She thanks all for such a warm welcome. She loves being on the stage and would like to thank everyone who is supporting her on my musical theatre journey.



RACHAEL KIRK
ENSEMBLE (WED, FRI, SAT EVE)

Rachael is excited to be joining Tudor Musical Comedy Society on stage for a second time after previously performing in the role of Jemima in Chitty Chitty Bang Bang with them.

Rachael has a passion for acting, singing and dancing and loves the fact she gets to share this with her mum who says she never shuts up singing!



EVIE SPOWAGE
ENSEMBLE

Evie is excited to be apart of the ensemble in this production. This is her first production she had done with Tudor. Before joining Tudor in previous years, Evie has taken to the stage at the West End and The Alexandra theatre with PQA in a couple of productions.

After quitting PQA after a while she found and joined Tudor in order to get back into her passion of performing. She has enjoyed working with the incredible cast and crew and does hope that you enjoy the show as much as they have!



THOMAS FLANAGAN
ENSEMBLE

Thomas is thrilled to be back on stage for his fourth show with TMCS. His musical theatre journey began with Made in Dagenham, followed by Chitty Chitty Bang Bang and Calamity Jane. He loves the thrill of singing and dancing alongside his friends and is always up for a challenge—on stage and at the bar! Known for his legendary ability to drink everyone under the table—though preferably after the final curtain call! He hopes you enjoy the show!



MYLEIGH DAVIS
ENSEMBLE (WED, FRI, SAT EVE)

Myleigh is glad to be performing with TMCS again, she previously played the role of Jemima in Chitty Chitty Bang Bang in 2023.

Performing since age 7, she has appeared in multiple productions with other societies, including SCMYT as Young Cosette in Les Misérables, Manor MTC as Marta in Sound of Music and in her first panto with Cloc MTC. She would like to thank her family and friends for their support and hopes you enjoy the show!!



REBECCA PALMER
BSL PERFORMER (THURSDAY 13TH MARCH)

Rebecca is thrilled to perform with TCMS for the third time after enjoying signing for Chitty Chitty Bang Bang and Calamity Jane. Charlie and the Chocolate Factory brought new challenges with Roald Dahl's unique vocabulary. She is completing her final British Sign Language qualification, aiming to become the youngest registered BSL interpreter by summer. Passionate about inclusive performances, she looks forward to returning for Grease!

Band

Musical Director: Andrew Timmins

Violin: Mandy Toor

Cello: Joe Roberts

Bass: Mike Green

Reed 1: Aimee Calderbank

Reed 2: Merle Calderbank

Trumpet: Craig Stevens

Trombone: Ian Brailsford

Guitar: Steve Cooper

Keyboard 1: Hayley Gibbs

Keyboard 2: Shaun Miles

Keyboard 3: Andy Timmins

Drums: Spencer Hedges

Backstage

Production/Stage Manager: Hellie England

Stage Crew:

Louise Altoft

Eloise Tanley

Abi Sharman

Sarah Cotter

Kate Holland

Dave Knight

Charlie Ward

Matt Cotter

Ben Foulds

Lewis Wescott

Set, Scenery & Props

Set design: Hellie England & Wayne Cooper

Set building & sourcing: Wayne Cooper &

Maurice Buxton

S.S. Wonka: Msquared Bathroom Centre

Set Dressing: Hellie England & Kevin Stableford

Additional props: Tina Townsend & Sutton Arts Theatre

Additional set: Dave Crump & Paul Lumsden

Props Manager: Kevin Stableford

Lighting, Sound & Projections

Lighting: Going Dark Theatrical Services

Sound: Sam Burkinshaw

Projections: Pete Muxlow

Costume

Wardrobe Mistress: Suzanne Harris

Costume Support & Wigs: Neil Ward

Front of House

Front of House Manager: Jayne Gleig

Box Office: Deb Stableford

Duncan Gleig

Charlie Ward

Julie Kukoda

Suzanne Lewis

Judy Willett

Stacey Muxlow

Billy Skinner

Ben Foulds

Owen Van-Vaerenburgh

Photography

Headshots/Promotional/Dress & Tech

rehearsal photography: Ben Foulds

Dress rehearsal photographs: Nigel Gambles

TMCS Trustees

Chair of the Trustees: Charlie Ward

Head of finance: Duncan Gleig

External funding: Kevin Stableford

External stakeholder manager: Jayne Gleig

Management Committee

Show Chairman, printed materials & programme design: Alex Nash

Vice Chairman & Fundraising Secretary: Charlotte Raybould

Ticket Secretary: Deb Stableford

Publicity/Social Secretary: Bethany Davis

Promotional Coordinator: Ben Foulds

Safeguarding Officer: Jo Browning

Child Protection Officer: Alex Tuckwell

Patrons

Royal Oak Public House, Stonnall

Mrs Benita Stableford

Mrs Penny Colley

Mrs Maria Raymond

Ms Jacqui Gaunt

Life Members

Mrs Jayne Gleig

Mr Kevin Stableford

Miss Beth Stableford

Mrs Deb Stableford

Get in Touch

Website: tudormcs.uk

Facebook: facebook.com/TudorMCS

Twitter/Instagram: @TudorMCS

Alex Nash would like to extend a huge personal thank you, on behalf of TMCS, to the following:

- **Hellie England, Wayne Cooper and Maurice Buxton:** TMCS cannot thank you enough for all you have done for this show; from designing set and making it all by hand - you have been invaluable throughout the entire process and we are so grateful for everything!
 - **Charlie Ward and Jayne Gleig:** Thank you both for your continued assistance and for stepping up when needed. I cannot thank you enough for all the support you have offered.
 - **Kevin Stableford:** Thank you for all the support you have offered, you have constantly gone above and beyond and been a rock.
 - **Ben Foulds:** For your constant support of the society and for always being willing to help.
 - **Msquared Bathroom Centre:** Thank you for providing the bath tub for 'S.S. Wonka' at no cost.
 - **Stonnall Village Hall & The Cooper Room:** for being our AMAZING rehearsal spaces.
 - **Royal Sutton Coldfield Town Hall:** for continued support and assistance at all times.
- All those unnamed who have supported TMCS and getting this show to the stage!**

S.I Love Aesthetics

Registered Nurse

Empowering your
Confidence - one beautiful
moment at a time

Trust the transformation

Forehead Creases
Brow lift
Glabella
Crow's Feet
Under Eye Bulge
Bunny Lines

Gummy Smile
Upper Lip Lines

Dimpled Chin

Contact Jessica: 07362 473 245

 Facebook.com/p.s.i.love.aesthetics

 Instagram.com/p.s.iloveaesthetics

Siblings Fur-Ever



**THIS
ARTWORK
WAS CREATED
BY THE VERY
TALENTED
EMELIA KIRK.**

**YOU CAN SEE MORE OF
HER INCREDIBLE
ARTWORK ON
WEBTOONS UNDER
THE NAME
AUTISM_EMZ
PLEASE GO AND OFFER
YOUR SUPPORT!**

*Emelia is the talented daughter of our very own
Liz Kirk who is playing 'Mrs. Gloop!'*



BEN FOULDS

*Ben Foulds is a versatile singer
and guitarist, renowned for his
captivating covers of popular
songs from the 60s to present.*



Enquire today for a free quote for your next event

Email: Ben@Foulds.biz

Socials: [@BenFouldsMusic](https://www.instagram.com/BenFouldsMusic)

Website: www.BenFouldsMusic.com



STONNALL VILLAGE HALL

Are you searching for the perfect venue to host your next event?

Look no further than the newly renovated Stonnall Village Hall! This exceptional venue offers a versatile space ideal for a wide array of activities, including:

- Group Meetings:** regular sessions, coffee mornings, luncheon clubs, and more.
- Entertainments:** plays, shows, concerts, and performances.
- Celebrations:** wedding receptions, birthdays, christenings, and other occasions.
- Classes:** hobbies, fitness, dance, and well-being activities.

Our hall features a spacious, well-lit car park with easy access from Main Street, and we provide complimentary WiFi in the main hall for your convenience.

Stonnall Village Hall boasts a large main hall, two cozy side rooms, and a fully-equipped kitchen. Additionally, we offer two separate WC rooms and a fully accessible disabled WC.

Visit our brand-new website to explore more photos of the hall and its fantastic facilities.

Special discounts are available exclusively for Stonnall residents. Don't miss out on this incredible venue – book your event at Stonnall Village Hall today!

The hall is always available for bookings - subject to prior commitments.



Main Street, Stonnall, WS9 9DY



www.stonnall-village-hall.co.uk



Booking Clerk: 07510253547



Email: stonnallvh@gmail.com

Stonnall Village Hall has been Tudors venue for multiple events, and previous/current show rehearsals. This will continue to be our rehearsal venue for Grease rehearsals also!
It is a wonderful space and we couldn't recommend it more!

The Cooper Room

01543 481504

COOPERSROOM@MAIL.COM

MAIN STREET, SHENSTONE, LICHFIELD WS14 0LZ



The conveniently located hall features a well equipped kitchen and also has toilets facilities.

CENTRALLY LOCATED IN THE VILLAGE, A SHORT WALK FROM SHENSTONE RAILWAY STATION, IS A WELL- MAINTAINED COMMUNITY HALL IDEAL FOR SMALL FUNCTIONS.

The room features central heating and a stage area! Contact us for booking at very competitive prices!



OUR WONDERFUL HOME TO ADDITIONAL TMCS REHEARSALS!

- rmp_bsl_performer
- Rebecca Palmer - BSL Performer
- rebeccapalmer.bsl
- rebeccapalmer.bsl@gmail.com



Rebecca Palmer
BSL Performer

PROVIDING ACCESS TO THE ARTS AND CREATIVE PROJECTS USING BRITISH SIGN LANGUAGE



ROYAL TOWN BLINDS

OF SUTTON COLDFIELD

**VERTICAL * VENETIAN * ROMAN *
PLEATED * PERFECT FIT * ROLLER**

FREE NO OBLIGATION QUOTE

*

12 MONTHS GUARANTEE

*

COURTEOUS SALES STAFF

*

FULLY TRAINED FITTERS

*

BLINDS MANUFACTURED IN THE U.K

*

QUICK DELIVERY

*

COMMERCIAL AND DOMESTIC

**Book your home visit:
info@royaltownblinds.co.uk**

www.royaltownblinds.co.uk

REV UP YOUR ENGINES FOR A SIMPLY 'ELECTRIFYING'
EXPERIENCE AT THE ROYAL SUTTON COLDFIELD TOWN HALL!

GREASE



**TUE 23RD - SAT 27TH
SEPTEMBER 2025**

DATES FOR THE DIARY

LAUNCH NIGHT THURSDAY 27TH MARCH 2025 7:30PM-10PM
AUDITION PREP SUNDAY 30TH MARCH 2025 7:30PM-10PM
AUDITION PREP THURSDAY 3RD APRIL 2025 7:30PM-10PM
AUDITION DAY SUNDAY 6TH APRIL 2025 10AM-6PM

THURSDAYS AT STONNALL VILLAGE HALL (114 MAIN ST, STONNALL, WALSALL WS9 9DY)
SUNDAYS AT THE COOPER ROOM (MAIN ST, SHENSTONE, LICHFIELD WS14 0LZ)



**TICKETS ARE ON SALE NOW!
SCAN TO GRAB YOURS NOW!**

DIRECTED BY JULIET FISHER, MUSICALLY DIRECTED BY ANDREW TIMMINS, CHOREOGRAPHED BY CONNIE MORTIBOY

BOOK, MUSIC, AND LYRICS BY JIM JACOBS AND WARREN CASEY

"HOPELESSLY DEVOTED TO YOU", "YOU'RE THE ONE THAT I WANT", "SANDY",
AND "GREASE" USED BY ARRANGEMENT WITH ROBERT STIGWOOD